

TRANSFORMATIONS: Rotation

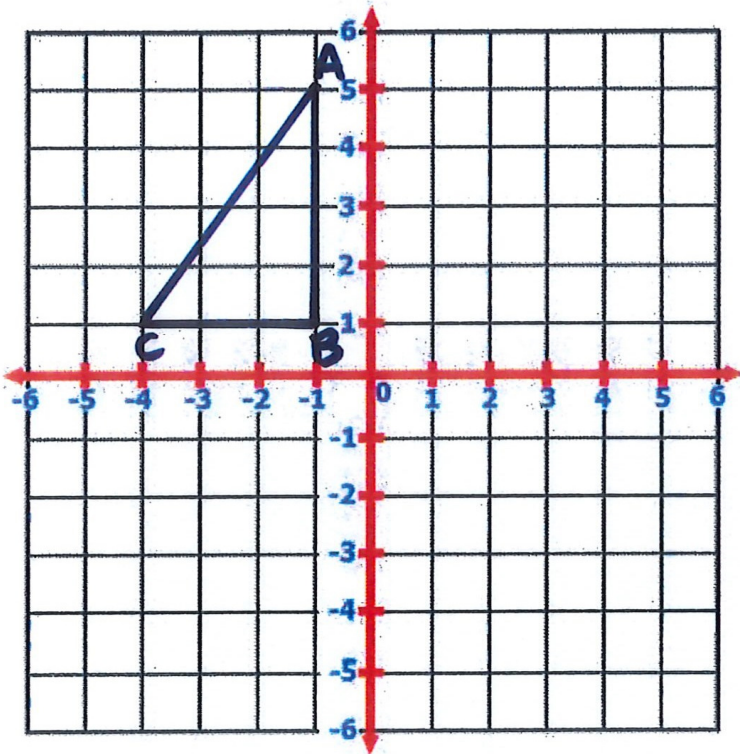
Date:

Name:

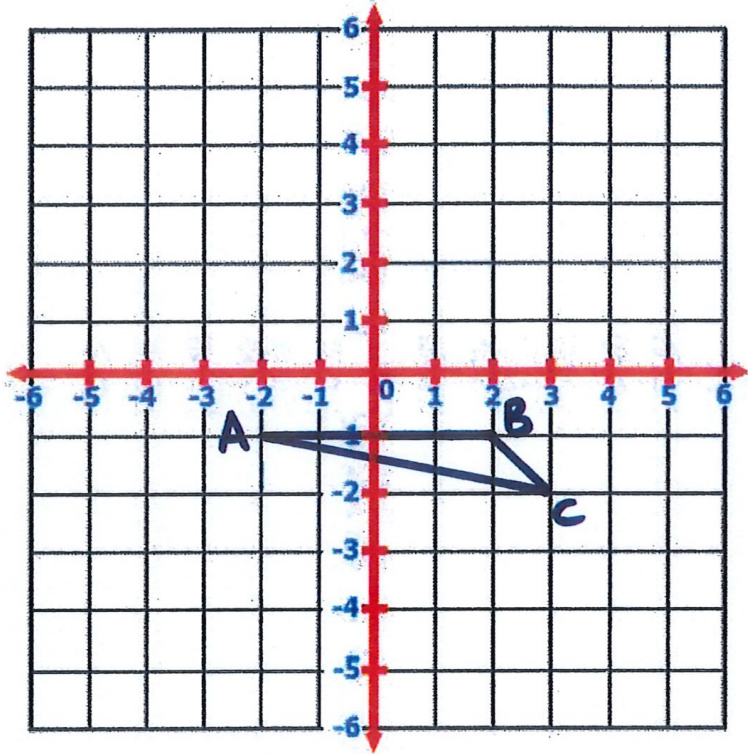
Rotate each shape as indicated about the point of origin. Label each image.

<http://www.learnersgrid.com>

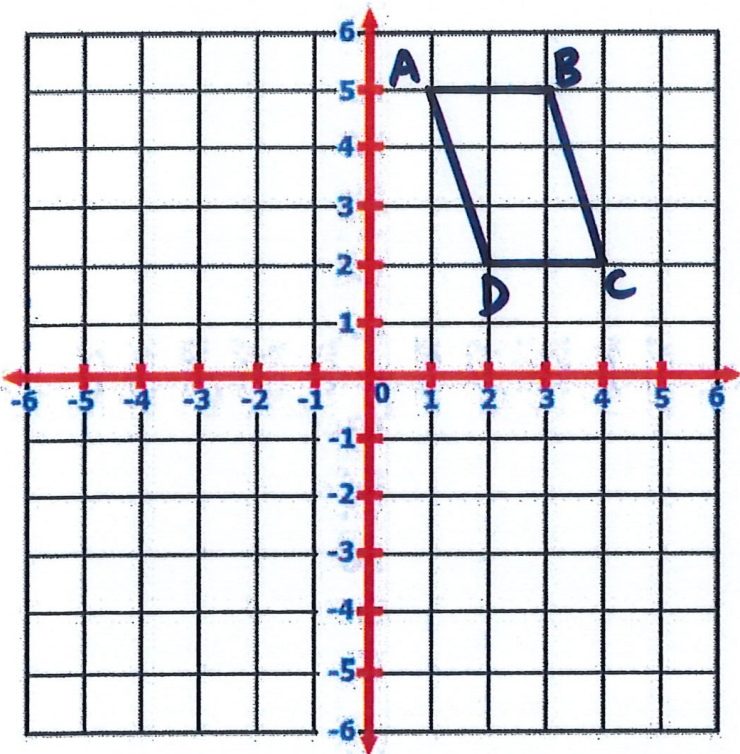
[1] Rotate the shape 180° about the point of origin. Label the image.



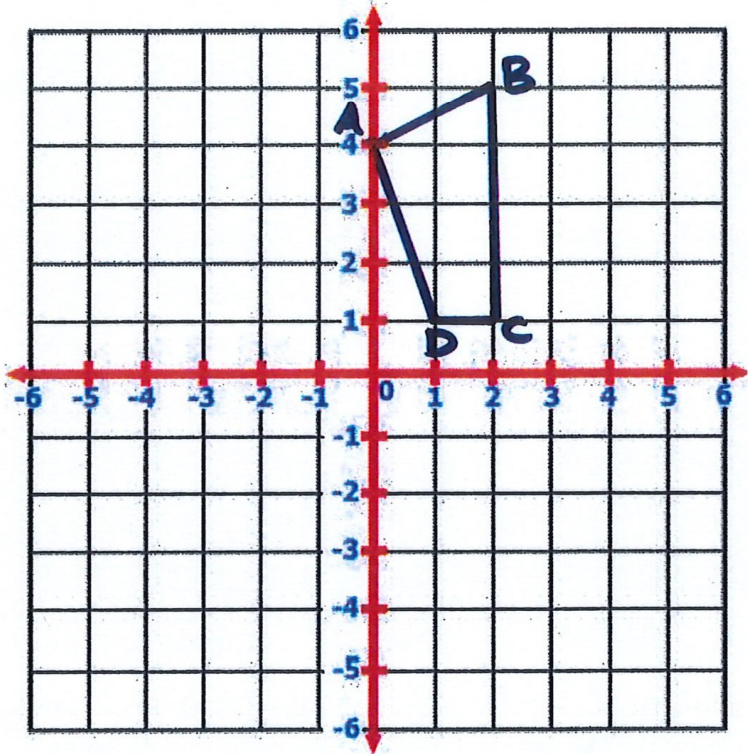
[2] Rotate the shape 180° about the point of origin. Label the image.



[3] Rotate the shape 180° about the point of origin. Label the image.



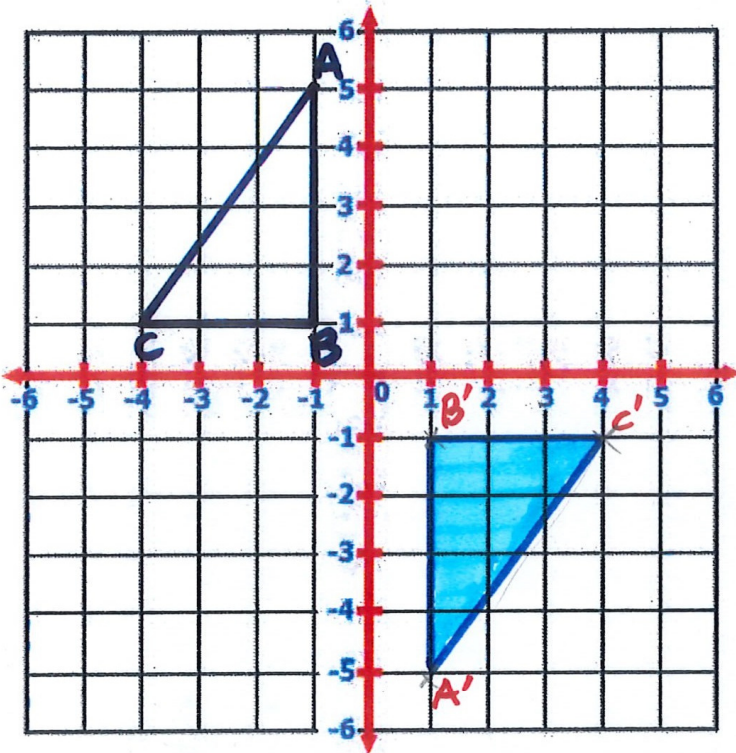
[4] Rotate the shape 180° about the point of origin. Label the image.



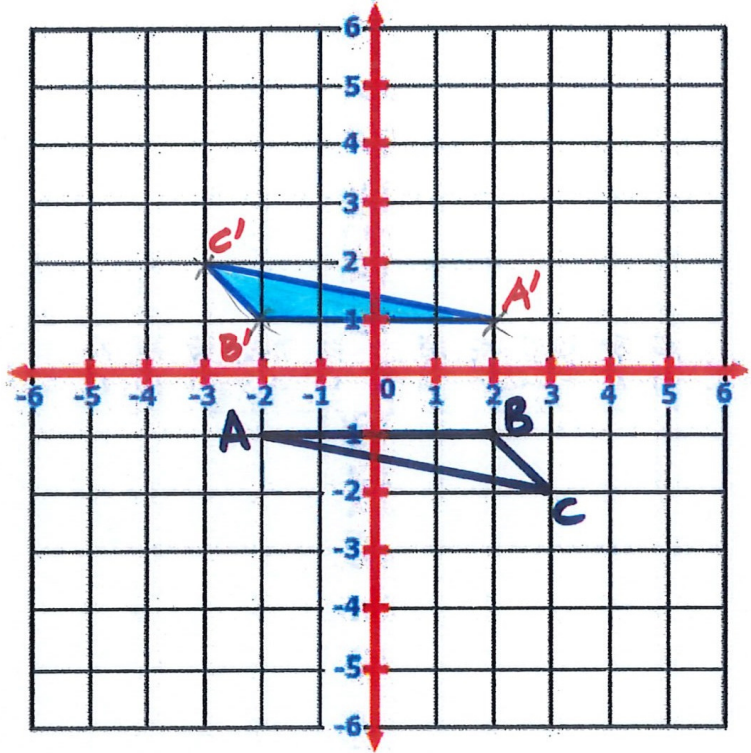
Rotate each shape as indicated about the point of origin. Label each image.

SOLUTIONS

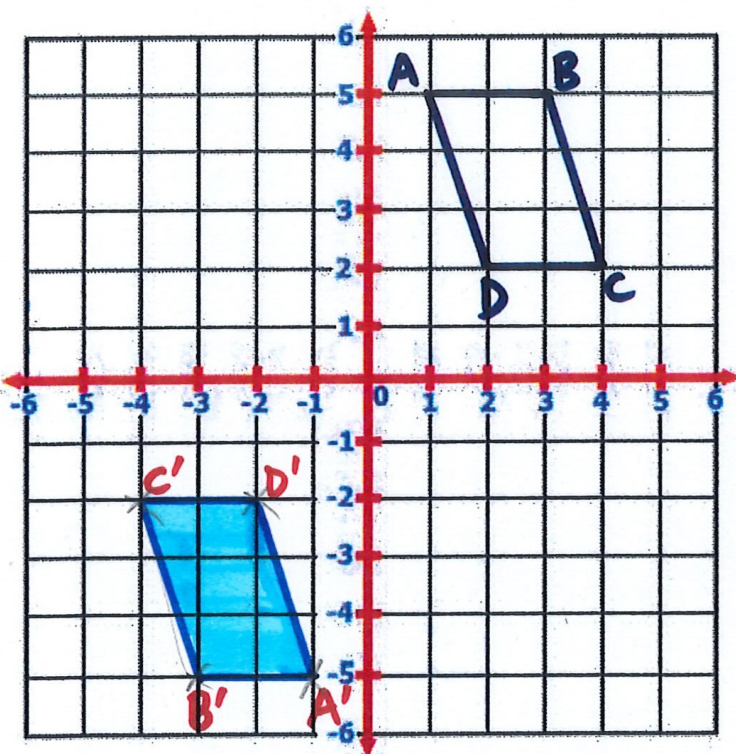
[1] Rotate the shape 180° about the point of origin. Label the image.



[2] Rotate the shape 180° about the point of origin. Label the image.



[3] Rotate the shape 180° about the point of origin. Label the image.



[4] Rotate the shape 180° about the point of origin. Label the image.

