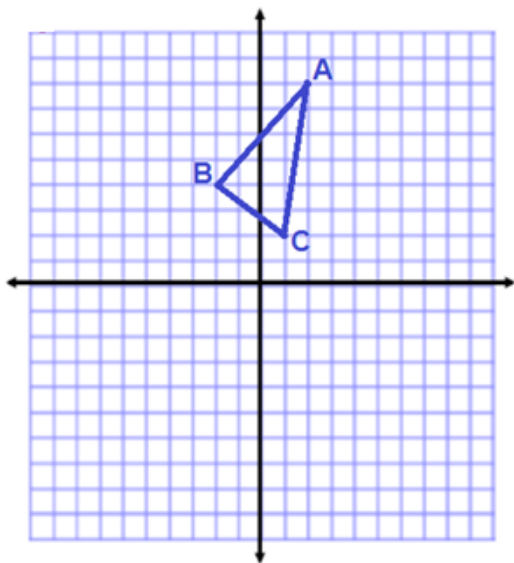


Translations.

- Give the coordinates of each point in the original shape.
- Translate each shape as indicated.
- Label each point in the image correctly (and include coordinates for each point)

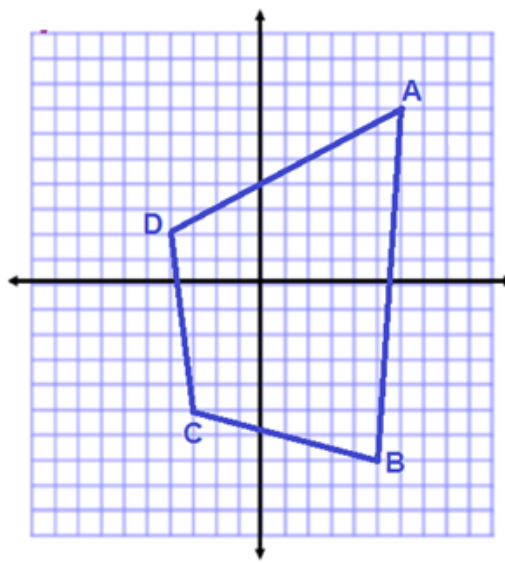
[1] Translate 6 right, 8 down



Coordinates:

A	
B	
C	

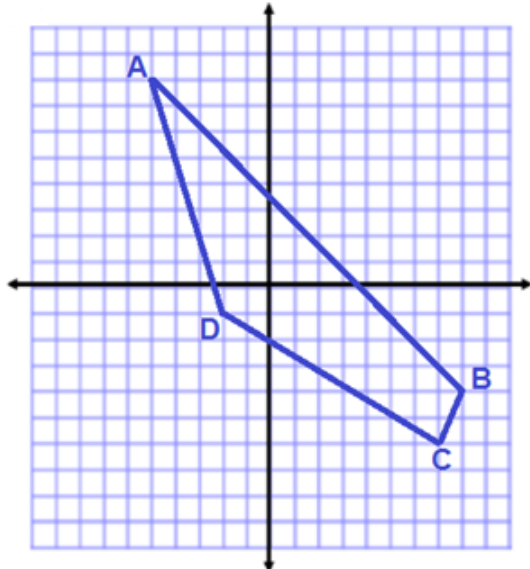
[2] Translate 5 left, 2 up



Coordinates:

A	
B	
C	
D	

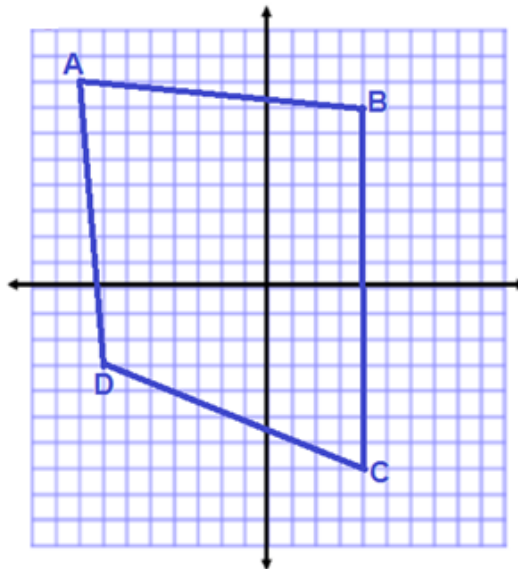
[3] Translate 3 left, 3 down



Coordinates:

A	
B	
C	
D	

[4] Translate 5 right, 2 up



Coordinates:

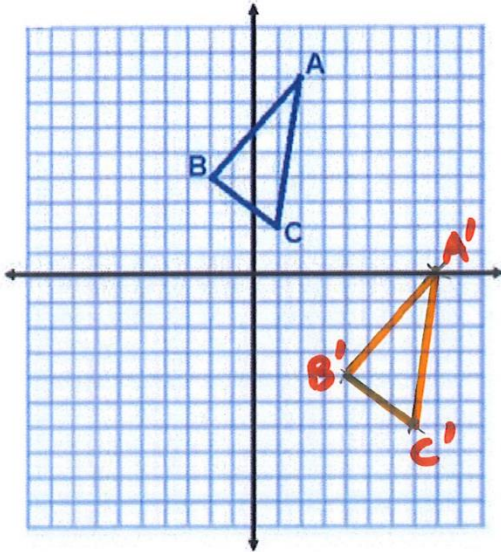
A	
B	
C	
D	

Translations.

- Give the coordinates of each point in the original shape.
- Translate each shape as indicated.
- Label each point in the image correctly (and include coordinates for each point)

SOLUTIONS

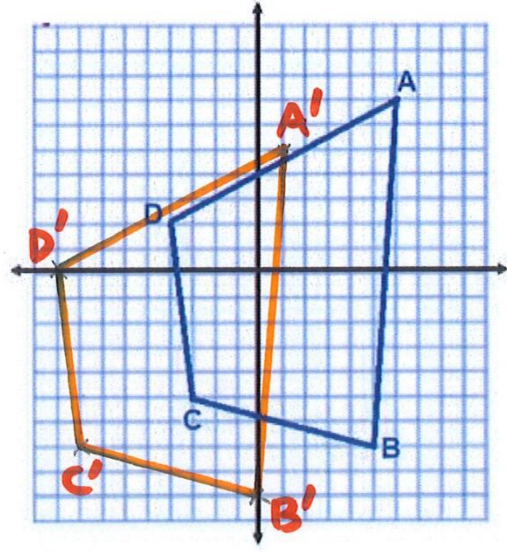
[1] Translate 6 right, 8 down



Coordinates:

A	(2, 8)	A'	(8, 0)
B	(-2, 4)	B'	(4, -4)
C	(1, 2)	C'	(7, -6)

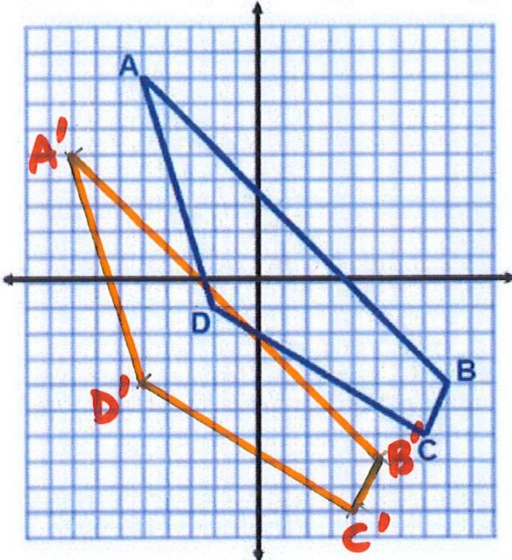
[2] Translate 5 left, 2 up



Coordinates:

A	(6, 7)	A'	(1, 5)
B	(5, -7)	B'	(0, -9)
C	(-3, -5)	C'	(-8, -7)
D	(-4, 2)	D'	(-9, 0)

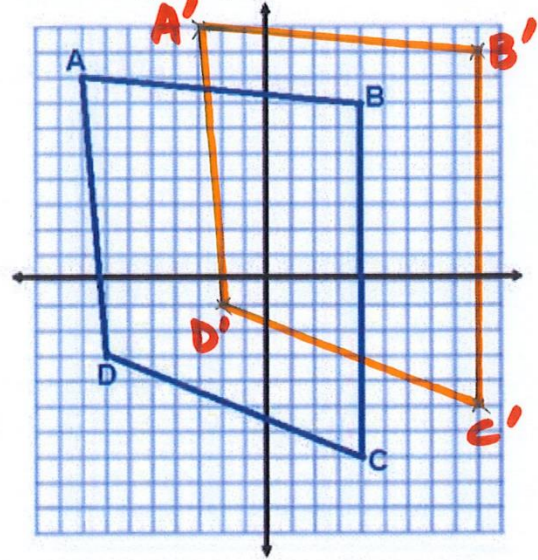
[3] Translate 3 left, 3 down



Coordinates:

A	(-5, 8)	A'	(-8, 5)
B	(8, -4)	B'	(5, -7)
C	(7, -6)	C'	(4, -9)
D	(-2, -1)	D'	(-5, -4)

[4] Translate 5 right, 2 up



Coordinates:

A	(-8, 8)	A'	(-3, 10)
B	(4, 7)	B'	(9, 9)
C	(4, -7)	C'	(9, -5)
D	(-7, -3)	D'	(-2, -1)