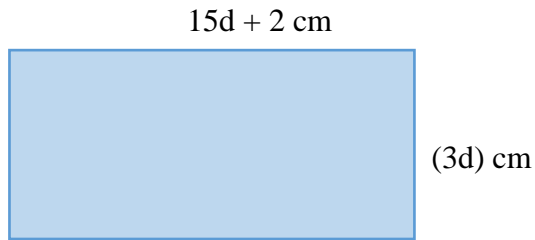
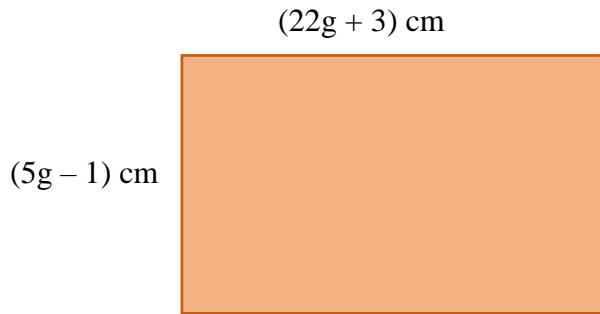


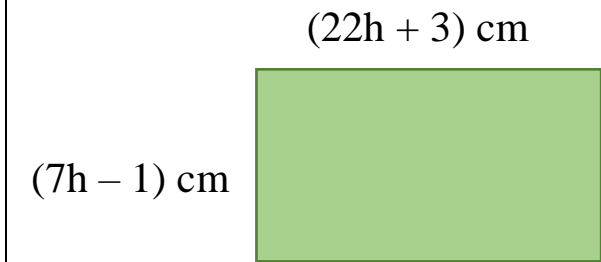
Give a fully simplified expression for the perimeter of this rectangle:



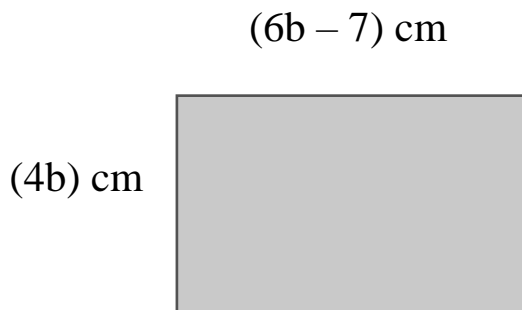
Give a fully simplified expression for the perimeter of this rectangle:



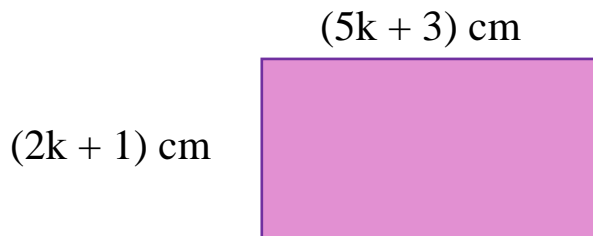
Give a fully simplified expression for the perimeter of this rectangle:



Give a fully simplified expression for the perimeter of this rectangle:



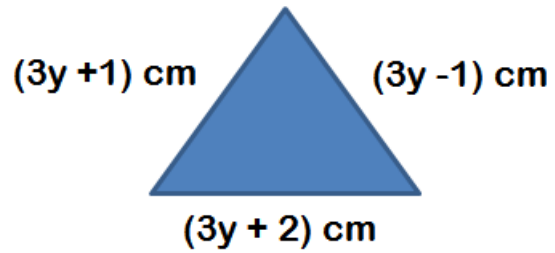
Give a fully simplified expression for the perimeter of this rectangle:



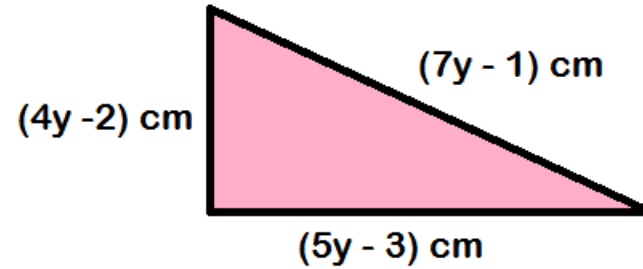
Give a fully simplified expression for the perimeter of this rectangle:



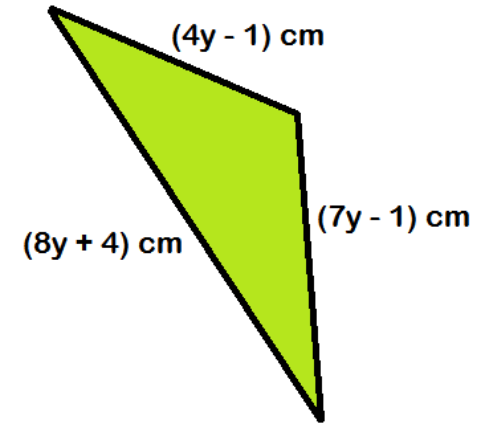
Give a fully simplified expression for the perimeter of this triangle:



Give a fully simplified expression for the perimeter of this triangle:

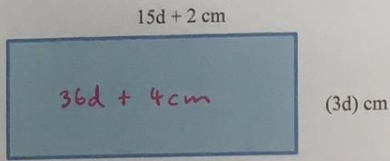


Give a fully simplified expression for the perimeter of this triangle:

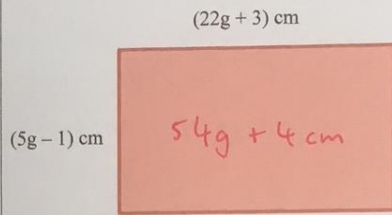


answers below

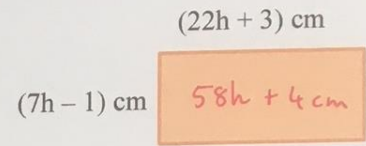
Give a fully simplified expression for the perimeter of this rectangle:



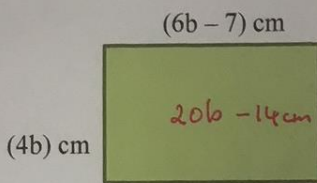
Give a fully simplified expression for the perimeter of this rectangle:



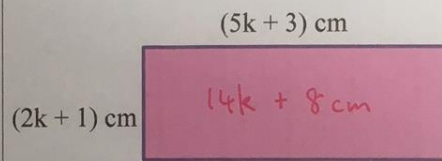
Give a fully simplified expression for the perimeter of this rectangle:



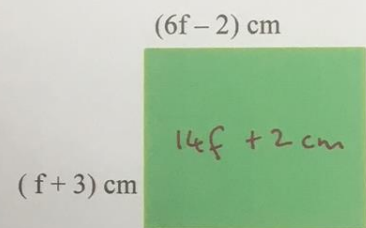
Give a fully simplified expression for the perimeter of this rectangle:



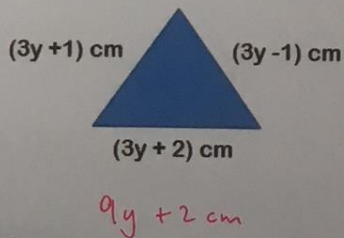
Give a fully simplified expression for the perimeter of this rectangle:



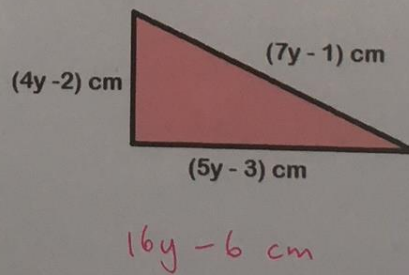
Give a fully simplified expression for the perimeter of this rectangle:



Give a fully simplified expression for the perimeter of this triangle:



Give a fully simplified expression for the perimeter of this triangle:



Give a fully simplified expression for the perimeter of this triangle:

